



the **icc**
birmingham

ANNUAL
CONFERENCE
2022



Conference and Exhibition Guide



NASUWT

The Teachers' Union

#NASUWT22

President
Angela Butler
General Secretary
Dr Patrick Roach
Honorary Treasurer
Chris Holland



CONTENTS

3

Map of Birmingham

4

Birmingham
International
Convention Centre
(ICC) Map
and Information

7

Conference
Information

10

Seating and Voting
Arrangements

11

Important
Information on the
Conduct of
Conference

15

Timetable Fringe
Sessions, Soundbite
Sessions and Wellness
Sessions

20

Welcome to the
NASUWT Exhibition

22

Exhibition Floor
Plan

23

List of Exhibitors

Map of Birmingham

Useful Telephone Numbers

The Arena 0121 780 4141
The ICC/Symphony Hall 0121 200 2000
National Rail Enquiries 0345 748 4950

Local services

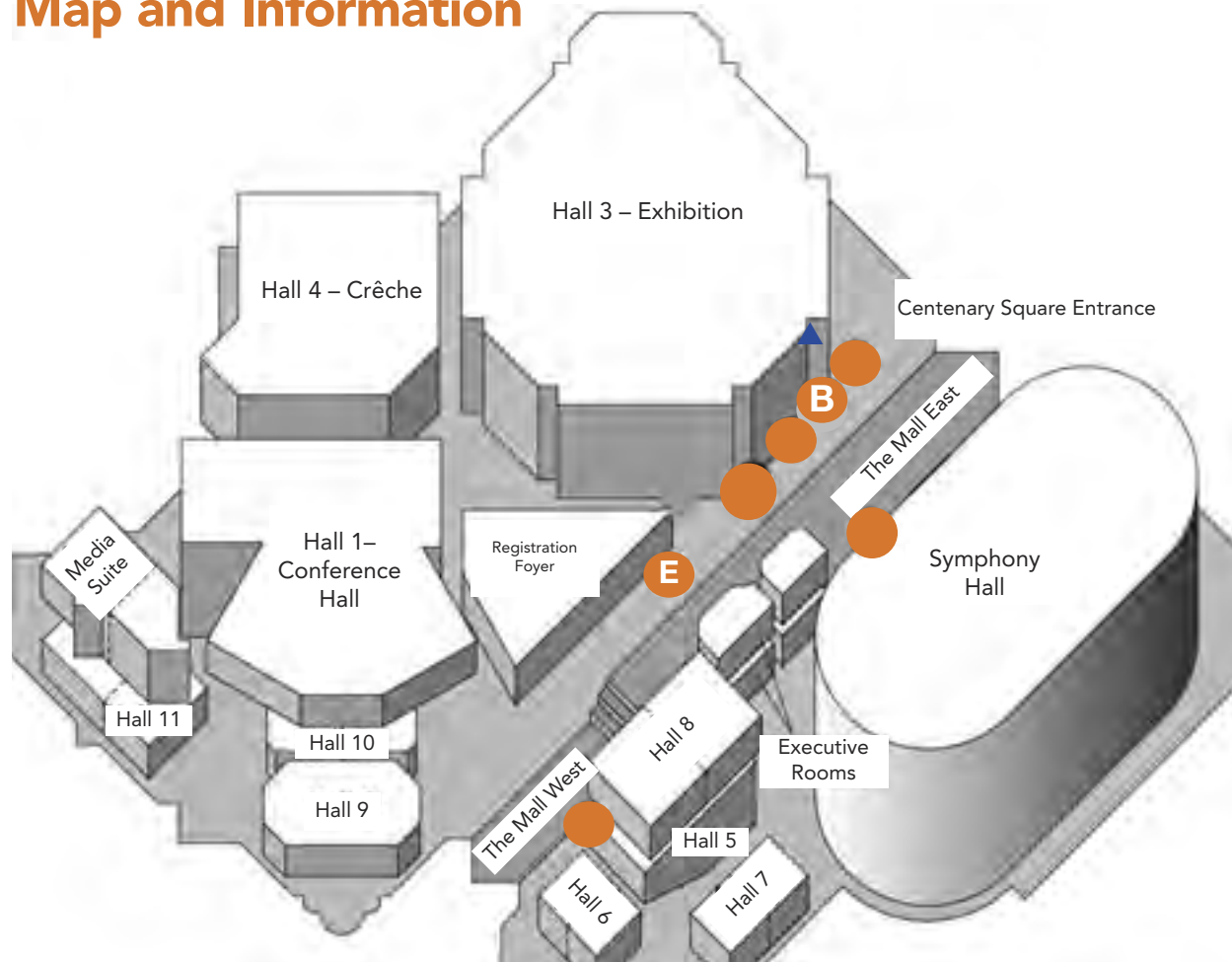
Centro Hotline 0121 200 2700
West Midlands Metro 0121 502 2006

Taxis

TOA Taxis 0121 427 8888
Taxi Birmingham 0121 000 2222



Birmingham International Convention Centre (ICC) Map and Information



Registration Foyer:
Registration, information and
app support
Hall 1: Main Conference Hall

Hall 3: Exhibition Hall
Hall 4: Crèche
Halls 9, 10 and 11:
Fringe Rooms

B: Cloakroom
E: Starbucks

Access to the ICC can be gained via the front entrance from Centenary Square or the rear entrance from Quayside and Brindleyplace.

Tram (WM Metro) runs from New Street Station (Grand Central) to the ICC (Library).

Registration and Conference access

Entrance to all areas of the NASUWT Conference is gained from the registration and information desks outside Hall 3, which is accessed via the escalators or lifts from the Mall (see map on page 5).

Wi-Fi Services

Attendees can connect to the NASUWT dedicated Wi-Fi network – simply select the NASUWT network when searching for a connection on your device and use the password – NASUWT22.

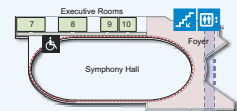
Cloakroom

The cloakroom is located on the Upper Mall next to the Business Centre. There is no charge. The cloakroom will be open at the times below:

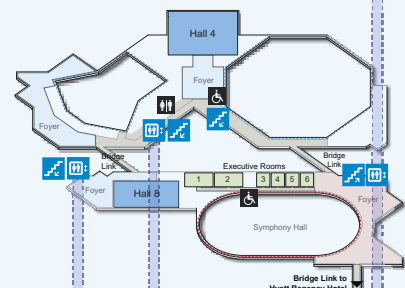
Friday 15 April	10:45 to 19:30
Saturday 16 April	08:00 to 19:00
Sunday 17 April	08:00 to 19:00
Monday 18 April	08:00 to 14:00

Accessible lift and toilet facilities

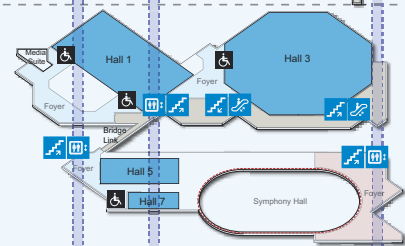
Level 5a



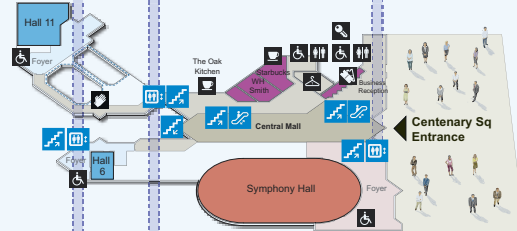
Level 5



Level 4



Level 3



Level 2



Key

- Staircase
- Escalator
- Lift
- Lift Route
- Toilets
- Baby Change
- Cloak Room
- Symphony Hall Box Office
- Eating \ Drinking
- Prayer Room

Key - Accessible toilets

Level 2

- Lower Mall, Castle Fine Art (Key Symbol)
- Next to Castle Fine Art Gallery
- Hall 9 & 10 Foyer

Level 3

- Box Office (key symbol)
- Symphony Hall Foyer
- Hall 6 Foyer
- Hall 11 Foyer
- Main Cloakroom (Key symbol)

Level 4

- Hall 7 Foyer
- Hall 1, Door 1
- Hall 1, Door 2
- Hall 3, Door 1

Level 5

- Hall 8 Foyer
- Hall 4 Foyer
- Executive Rooms

Level 5a

- Executive Rooms

Facilities marked with require radar keys to be opened



Luggage

The cloakroom has limited room to store luggage: this will be made available on a first-come, first-served basis. It may therefore be advisable to make arrangements for any necessary storage of luggage to be facilitated at your hotel.

Smoking Policy

Smoking must take place outside of the venue in the designated smoking areas. Using e-cigarettes or vaping is not permitted inside the venue.

Facilities for attendees with disabilities

The NASUWT makes every effort to ensure that any venue used is accessible for members with disabilities.

The ICC is accessible to wheelchair users via ramps or lifts. Assistance dogs are welcome throughout the venue. The ICC will provide the following:

- reserved seating in the Conference Hall accessible for wheelchair users if notified in advance;
- disabled parking needs to be pre-booked in advance by calling – 0121 644 6000;
- accessible route to the stage;
- disabled toilets on all levels;
- fringe meeting rooms accessible to wheelchair users;
- tactile signage fitted in the majority of lifts;
- hearing induction loop systems available at the ICC registration desks and

- large keyboard available on the local media stand.

The ICC belongs to the Employers' Forum on Disability and has signed up to the Disability Access Charter. An in-house committee meets regularly to discuss services for disabled visitors. Means of access to the building are regularly audited. If NASUWT Representatives have any suggestions or comments, they are encouraged to e-mail businessservices@theicc.co.uk.

Evacuation Procedures

In the event of an emergency situation, the ICC Birmingham's Fire Evacuation plan will be implemented immediately. Only trained personnel should be involved in the management and co-ordination of a building evacuation. Please follow the instructions of the ICC front-of-house hosts and/or venue staff who will direct you to your nearest exit and safe assembly point. Please also follow any instructions given by the automated PA announcement should it be activated.

Medical Provision and Accident Reporting

As a city centre location, the ICC is serviced by the West Midlands Ambulance Service. The ICC security staff provide trained first-aid responders. Should you require medical assistance, contact an ICC host, who will then arrange for first aiders to attend and/or request a paramedic. Hosts should also be advised of all accidents on site to ensure that they are properly recorded.

Prayer Room

The ICC Prayer Room will be available throughout the duration of Conference and is situated on the Mall, past Starbucks. This is for use by all religious groups and accessed via the security keypad by the entrance door. A sign is situated in the room indicating which direction is east.

Religious Services

There will be an ecumenical service held in Hall 9 of the ICC at 08:00 on Sunday 17 April. For further details of other services around Birmingham, please see page 13.

Catering

- Exhibition Hall – refreshments and light bites can be purchased from the catering outlets within the hall 3.
- Starbucks coffee shop – the usual selection of drinks, snacks and lunches all served by staff directly employed by the ICC.
- Subway – discover all of the tasty subs and melts.

Conference Information

Paperless Conference and App Support

As part of the Union's commitment to increased sustainability and reduced contact throughout, Annual Conference will be paperless.

All Conference information available both via the Union's new conference App and via the NASUWT website. We would recommend accessing the materials via the App for maximum interaction with Conference and an enhanced experience.

The Conference App which is called, NASUWT Conferences and Events, is available to download via the links below:

App URL: <https://eur.crowd.cc/nasuwt22>

Webpage URL: <https://eur.crowd.cc/s/JZi>

To ensure you have an enhanced and effortless Conference experience and you feel fully briefed on how to use the App, please take a moment to view how to download and access the app guidance. We will be providing you with a short 'how to use the App' video.

When you are on-site there will be a dedicated App Support Desk where trained colleagues will be on-hand throughout Conference to ensure the maximum usability and accessibility.

How to access the App

- If you are using a laptop, you will be able to open the App on your web-browser.

- If you are using a tablet or smartphone, you will be required to download the App from your App stores.

It is worth noting that you can have access to the App on multiple devices, e.g. both logged in via your smartphone and on your laptop web-browser.

Only those who have registered for Conference can have access to the App.

1. When you open the App you will be asked to complete the fields [pictured].

You must enter the email address we have registered for you to attend Conference (the same email address you received your joining instructions to).

2. You will be send a six-digit verification code to this email address (please check your junk/spam inboxes). Once received, enter this.

3. You will now have access to the Conference App.

You are encouraged to download and save the main documents to your device before attending Conference.

If you wish to have any documents printed, you will be able to download these documents from the website or the Conference App and you can print these documents yourself at home.

There will be no printing facilities at Conference.

Conference badge

Your conference badge will be sent to you via email and this will include a unique QR code. Onsite, you will self-scan this QR code to allow you to print out your own Conference badge at the registration and information desks outside Hall 3.

Registration and information

Information about any aspect of Conference organisation, including the fringe sessions programme, can be obtained from the NASUWT Conference registration and information desks in the registration foyer outside Hall 3.



Fringe meetings

A programme of fringe meetings will take place on Friday, Saturday and Sunday in Halls 9, 10 and 11. A full listing of these can be found on page 15. Refreshments will be available at these meetings.

Getting the most of Conference

A meeting will be held in Hall 9 of the ICC on Friday 15 April at 12:00 to explain Conference procedures and support engagement and involvement in Annual Conference. The meeting is aimed at first-time elected representatives but is open to all elected representatives.

Exhibition

Visit the exhibition in Hall 3 to meet our exhibitors and reconnect with colleagues both new and familiar over a cup of coffee. Mini-educational sessions will be running in the lunch breaks in the popular soundbite zone.

The NASUWT stand will be showcasing the campaign for a better deal for teachers how members can organise to win, including the tools and support available. Hear about the commitment for racial justice, including the work around the Union's Big Conversation, anti-racism work and decolonising the curriculum.

Within the exhibition, you will be able to wind down between sessions within the wellbeing and relax and recharge zones which include facilities to recharge your devices. The Conference exhibition is based in Hall 3.

Soundbite Sessions

A programme of shorter taster sessions will take place on Friday, Saturday and Sunday lunchtimes within the exhibition – Hall 3. A full listing of these can be found on page 17.

Wellness Sessions

A programme of wellness sessions will take place on Friday, Saturday and Sunday lunchtimes within the exhibition – Hall 3. A full listing of these can be found on page 18.

Conference Hall

The main Conference takes place in Hall 1.

Crèche

The crèche is based in Hall 4 of the ICC. Access to the crèche area will be restricted to individuals delivering and collecting their children. A Crèche registration desk will be available in the registration foyer outside Hall 3 on the Friday. Without exception, only children who have been pre-registered will be accepted by the crèche.

Opening Times

Friday 15 April: 11:00 – 18:30
Saturday 16 April: 08:00 – 18:30
Sunday 17 April: 08:00 – 18:30
Monday 18 April: 08:00 – 14:00

Voting Cards

Voting cards for each Local Association can be found at the Registration and Information Desk in the foyer. A member of the delegation will need to collect this on arrival.

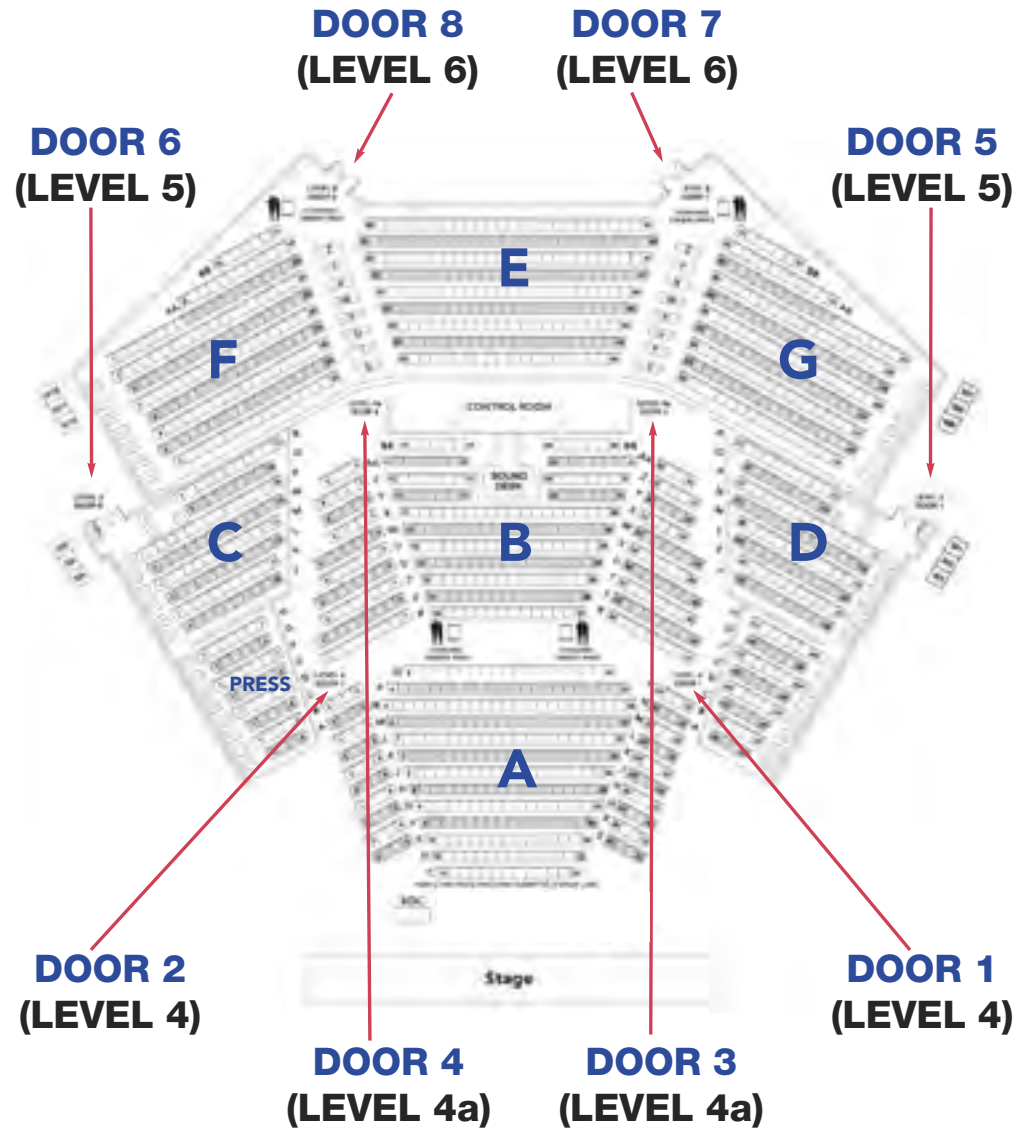
REPLACEMENT VOTING CARDS WILL NOT BE AVAILABLE AT CONFERENCE.

Photographs

Photographs of speakers will be available on the Conference App. Support on how to send images, records and press releases to regional and local press can be sought at the Local Media Stand within the exhibition – Hall 3. On Monday, the Local Media Stand will relocate to the registration and information desks in the registration foyer.



DOOR PLAN OF CONFERENCE HALL



**No entry will be granted to any session unless credentials are presented.
For queries, please go to the registration desk.
Non-voting attendees must sit in blocks F and G. Any votes cast in these
blocks will not be counted.**



Seating and Voting Arrangements

Seating and Voting Arrangements

Conference Hall Seating – Hall 1 of the ICC is fixed theatre-style seating. All seats have a pull-out table. The lower seating area of the hall will be set with tables. If you are in another area of the hall, please speak to an ICC venue host who can assist you. Seating can only be adjusted by ICC staff, and representatives should under no circumstances try to do this themselves.

Speakers Seating – Reserved seating for speakers is in Block A, front row C.

Wheelchair Users – Row Q of Block A is the reserved area for representatives using wheelchairs. The speaker's rostrum is at stage height at the front of the Hall and has an accessible route. If any representative will require speaker's access to the stage and will be using a wheelchair, please notify an ICC host or an NASUWT staff member who will make appropriate arrangements.

Limited Mobility – Anyone who has difficulties negotiating stairs or any distances should speak to an ICC host or an NASUWT staff member who will make appropriate arrangements.

Hearing Impairment – Induction loops are available if notified in advance from the registration and information desks in the registration foyer.

Observers, Visitors and Guests Seating – Will only be allowed in Blocks F and G. These can be accessed via doors 7 and 8 on Level 6.

Elected Representatives Seating – The President will only take into account votes cast by representatives seated in Blocks A, B, C, D and E.

All elected representatives will vote via a show of hands and must be in the correct voting area of the hall. The President will not count any other votes in non-voting areas so it is vital that elected representatives sit in Blocks A, B, C, D or E.

Details of which credentials will allow access to which session and via which door can be found in the Foyer of the Conference Hall.

Important Information on the Conduct of Conference

Admission to Private Sessions and General Secretary's Address

Access to these sessions is restricted to NASUWT members. Proof of membership must be shown to enter either the Conference Hall or the Visitor's Gallery. Elected representatives will only be allowed access to these sessions with their elected representative badge, membership card or other proof of NASUWT membership.

Admission to Public Sessions

Public Sessions of the NASUWT Annual Conference are open for all NASUWT members and members of the public to observe. Nobody will reasonably be denied access, but all observers and visitors will need to collect credentials from the registration and information desks outside Hall 3. The NASUWT will record the name and address of every visitor issued with a badge. Observers and visitors are not allowed on the floor of Conference and must sit in the allocated areas.

Code of Conduct

The NASUWT is committed to ensuring that all members, representatives, staff, visitors, contractors and other third parties behave in a courteous manner at all times when engaged

in work for or on behalf of the Union. Aggressive, offensive, intimidatory, disrespectful or other unacceptable behaviour will not be tolerated.

The Use of Social Media

Please remember that social networking sites such as Facebook and Twitter are public spaces and that any tweet or Facebook comment can be quoted by the media. Consequently, please refrain from tweeting during private sessions.

The NASUWT does urge representatives to re-tweet tweets from @nasuwt and to use the #nasuwt22 hashtag.

Important Note to Speakers

Representatives need to be aware that the press will be present during all Public Sessions. In order to ensure that there is no comeback on the individual speaker or the Union, they should not name their school, any other school, individual pupils or a colleague without the express permission of the individual concerned or the headteacher. The press may want to interview a speaker after their contribution to Conference; if approached by the press, representatives are advised to go to the Local Media Stand in the exhibition hall to

seek advice. The press often asks for a copy of speeches so it is advisable to write down your speech in the event that this may happen.

Seats Reserved for Speakers

Seats have been reserved in Block A, Row C, front row closest to the stage, for representatives wishing to speak. Representatives intending to speak should move to these seats at the commencement of the relevant debate.

Please note: any representative not waiting to speak but occupying these reserved seats will be asked to move.

Speaker Cards

All speaker cards are now electronic and accessible via the Conference App. If you experience any issues with the Conference App, there are four ipads on the floor of Conference where you can put in speaker card and an NASUWT staff member will be on hand to support you.

Representatives wishing to speak in any debate must complete an electronic speaker card which includes details of their name, Local Association, block name, row and seat, e.g. block A, row K, seat 7, stating whether they are speaking FOR, AGAINST or TO the



motion or amendment. Representatives will also be asked to indicate whether they are a first-time representative and/or a first-time speaker at Conference. This information is to enable the President to preserve a balance in debate and include representatives with a breadth of experience.

Once representatives have submitted a speaker card, they are to move to the front of the hall and sit in Row C in Block A. They are also to monitor their email inbox for any correspondence from the Standing Orders Committee. This is in case there are any queries with the request.

Ruling from the Chair

Conference shall be chaired by the President or failing him/her the Ex-President or failing him/her the Senior Vice-President or failing him/her such other person as may be elected by Conference.

The decision of the Chair on any question concerning Conference business and/or the interpretation of Standing Orders shall be final.

Points of Order

A point of order may be raised in the online form of an inquiry as to whether something being said or done is in order. Any member, whether s/he has spoken or not, can raise a point of order at the discretion of the Chair.

Procedural Motions

The following and only the following Procedural Motions may be moved and only at the discretion of the Chairperson:

- i. that the speaker be further heard;
- ii. that the speaker be not further heard;
- iii. that the question be now put;
- iv. that the question be not put;
- v. that the Motion be referred to the National Executive for further consideration;
- vi. that the time for speakers provided by Standing Order 15 be reduced to a specified time for the remainder of the session or for the remainder of Conference;
- vii. that a Motion allocated to Private Session be debated in public;
- viii. that a Motion allocated to Public Session be debated in private;
- ix. that an Urgency Motion submitted in accordance with Standing Order 8 be called for debate;
- x. that a Standing Order be suspended for a specified purpose.

Amendments

The President will call amendments to motions in the order shown on the Agenda. In order to submit an amendment of which prior notice has not been given in the Agenda, representatives must complete an electronic amendment card which includes details of their amendment, name, Local Association, block name, row and seat, e.g. block A, row K seat 7. The names and Local Associations of the mover and seconder must be included on the electronic form.

The National Executive and Local Associations are allowed to submit motions to Conference. Consequently, amendments may be submitted

only by members of the National Executive or representatives of Local Associations. An amendment must not be a direct negative of the motion. An amendment must be relevant and not simply obstructive. It should seek to modify or amplify the original motion by deletion, addition or substitution of certain words. An amendment may only be moved or seconded by representatives who have not already spoken to the motion.

The mover of an amendment has no right of reply to the discussion thereon. If an amendment is carried, the original motion as amended becomes the substantive motion; if it is lost, the original motion is again put before the meeting. In either case, discussion may proceed or a further amendment may be moved, unless the substantive motion is voted upon. Only one amendment may be considered at a time.

All elected representatives will vote by a show of hands in the correct voting areas. This will be the only thing that the Chair will count when a hand vote is called.

Card Vote

A card vote will be called if, following the result of a vote being announced, representatives of no fewer than 40 Local Associations whose combined membership is 8,000 or more rise from their places and claim a card vote. Local Associations can collect their book of voting cards from the Registration and Information desk in the foyer.

Should a card vote be called, the President will announce the number of the card to be used. The stewards will collect first those cards FOR the motion or amendment. They will then collect those AGAINST.

Finally, they will collect those cards where a Local Association is divided on the issue and has split the vote. If a Local Association decides to split the vote, the number of votes FOR and AGAINST must be recorded on the card. The number of votes must not exceed the total number of votes that is preprinted on the card. The use of, for example, '60% FOR, 40% AGAINST' is NOT acceptable; actual

numbers are required. Any breach of this guidance will result in the card being treated as spoiled.

End of Session

At the end of the penultimate Public Session and at the end of the last Private Session, any motion or amendment under discussion and any remaining motions not called for debate will be put to the vote without debate unless 75 members stand to oppose the putting, in which event the motions subject to the proposed vote shall be deemed withdrawn.

This does not necessarily imply opposition to the motion. It may be that insufficient time is left for all the relevant facts to be presented and this procedure will prevent a decision being made without the full facts being known.

Please be Considerate

Members entering or leaving the Conference Hall while a debate is in progress are asked to do so as inconspicuously as possible and between speeches whenever they can.

Holy Week and Easter Worship in Birmingham City Centre

ICC Birmingham, Hall 9

17 April Easter Sunday
08:00 Ecumenical Service

St Chad's Cathedral (RC) St Chad's Queensway, Birmingham B4 6EU

[Click here for more information on service times](#)

St Catherine of Siena Catholic Church

Bristol Street, Birmingham B5 7BE
[Click here for information on service time](#)

Birmingham Cathedral (CofE)

Colmore Row, Birmingham B3 2QB
[Click here for information on service times](#)



PROGRAMME

FRIDAY 15 APRIL

14:00 to 16:00

Private Session

Members only

Minutes

Financial Statements

**Proposed amendment to the Annual
Conference Standing Orders**

16:00 to 17:00

Official Opening of Conference

Induction of the President

President's Address

17:00 to 19:00

Celebration Event

SATURDAY 16 APRIL

09:00 to 12:30

Public Session

Annual Report of the National Executive

Motion: **Workload**

2(b) Motion

12:30 to 14:00

Lunch

14:00 to 17:30

Public Session

Motion: **Pay**

International Solidarity Award

2(c) Motion: **Northern Ireland**

17:40 to 18:30

Fringe Programme

SUNDAY 17 APRIL

09:00 to 12:30

Public Session

Motion: **The Impact of COVID-19 on
Teacher and Pupil Mental Health**

2(c) Motion: **Scotland**

General Secretary's Address

12:30 to 14:00

Lunch

14:00 to 16:30

Public Session

Motion: **Class Size**

Awards

Recruiter of the Year

Best Engagement with Under-Represented
Groups

Representative of the Year

Health and Safety Award

2(c) Motion: **Wales**

Motion: **Hybrid Teaching and Excessive
Workload**

16:30 to 17:30

Private Session

17:40 to 18:30

Fringe Programme

MONDAY 18 APRIL

09:00 to 13:00

Public Session

Motion: **Sustainability**

Private Session

13:00 to 13:30

Public Session

President's Business

(1) Members leaving National Executive

(2) Vote of thanks to Conference Organisers

(3) Vote of thanks to President

Timetable Fringe Sessions, Soundbite Sessions and Wellness Sessions

Timetable of Fringe Meetings

Date	Time	Title	Location	Type
Friday 15 April	12:00-13:00	Getting the most out of Conference	Hall 9	Fringe
Friday 15 April	12:45-13:30	Anti-Racism and Decolonising the Curriculum	Hall 10	Fringe
Friday 15 April	12:45-13:30	<i>Organise to Win</i> : Mental Health and Wellbeing Support for Activists	Hall 11	Fringe
Saturday 16 April	17:40-18:30	<i>Organise to Win</i> : Securing Safe Workplaces	Hall 9	Fringe
Saturday 16 April	17:40-18:30	<i>Organise to Win</i> : Working with Citizens UK on School-based Counsellors	Hall 10	Fringe
Saturday 16 April	17:40-18:45	Hybrid International Roundtable	Hall 11	Fringe
Sunday 17 April	17:40-18:30	<i>Organise to Win</i> : Tackling Digital Poverty	Hall 9	Fringe
Sunday 17 April	17:40-18:30	Pensions and the McCloud Judgement	Hall 10	Fringe
Sunday 17 April	17:40-18:30	<i>Organise to Win</i> : Campaigning Against Online Abuse	Hall 11	Fringe

Friday 15 April – 12:00-13:00

Getting the most out of Conference

This meeting will explain Conference procedures and support engagement and involvement in Annual Conference. Open to all elected representatives, it will be particularly useful to those attending for the first time.

Friday 15 April – 12:45-13:30

Anti-Racism and Decolonising the Curriculum

Decolonising the Curriculum is integral to the Union's ongoing programme of work on anti-racism. This fringe will introduce the NASUWT Framework on Decolonising the Curriculum and explore how it can be implemented as part of teaching and learning.

You will be able to hear first hand from practitioners about the work they are doing to decolonise the curriculum and implement anti-racist practice through their teaching.

Friday 15 April – 12:45-13:30

Organise to Win: Mental Health and Wellbeing Support for Activists

This Fringe event will address the mental health and wellbeing of NASUWT activists. The session will welcome a guest speaker from the Teacher Support Network along with an



NASUWT Mental Health First Aid-trained tutor.

This interactive event will provide an opportunity to assess present activist wellbeing whilst exploring current and future NASUWT support.

Saturday 16 April – 17:40-18:30

Organise to Win: Securing Safe Workplaces

All teachers have a right to a safe and healthy workplace. This fringe will look at the importance of ensuring workplaces are safe and healthy, both from physical and psychosocial hazards.

This fringe will also look at strategies and approaches to secure safe workplaces, including the use of collective action where appropriate.

Saturday 16 April – 17:40-18:30

Organise to Win: Working with Citizens UK on School-based Counsellors

School-based counselling can reduce psychological distress and improve pupil attainment, attendance and behaviour. There are huge benefits for young people, school staff and the wider health service in having access to school-based counsellors. However, far too few schools in England have access to quality provision. The NASUWT has joined together with Citizens UK and the British Association for Counselling and Psychotherapy (BACP) to build a campaign to get high-quality school-based counsellors in every school.

This session will hear from successful campaigns in the North East region and discuss why this agenda is so vital, focusing on the current mental health crisis impacting children and young people. It will look at what is happening on the ground and how teachers can get involved in the campaign to call for quality school-based counselling in their school – and link up with community alliances to get real improvements in local mental health provision in their area.

Saturday 16 April – 17:40-18:45

International Roundtable – Educating for Peace and Democracy

The NASUWT stands in solidarity with teachers, students and others around the world in calling for peace, democracy, security and respect for human and trade union rights. Trade unions across the world are working to secure peace, democracy and human rights and to provide vital humanitarian support and assistance to people in conflict situations and those who have been displaced.

The International Roundtable will give Conference representatives the opportunity to hear from leaders of sister trade unions around the globe, who will be shaping a debate on the role of education and trade unions in educating for peace and democracy.

Sunday 17 April – 17:40-18:30

Organise to Win: Tackling Digital Poverty

The pandemic has highlighted the extent of digital poverty and exclusion faced by children and young people across the UK. Despite the

investments made by governments and administrations in enhancing access to educational technology, too many learners still cannot access the range of digital opportunities available to their peers.

The Digital Poverty Alliance is working to draw attention to and tackle the causes and consequences of digital exclusion. This fringe meeting will provide an opportunity to learn more about this work and how schools can address these issues effectively.

Sunday 17 April – 17:40-18:30

Pensions and the McCloud Judgement

This fringe meeting will provide members with vital information about changes to the Teachers' Pension Schemes in the UK from 1 April this year, arising from the implementation of the McCloud remedy (changes to transitional protection in the schemes).

Sunday 17 April – 17:40-18:30

Organise to Win: Campaigning Against Online Abuse

This fringe will explore the unprecedented rise in reports of online abuse. It will question how it has become normalised for children, young people and school staff, as well as explore solutions for preventing and reporting harmful online content.

You will hear from specialist organisations such as the UK Safer Internet Centre who will signpost available support and strategies for tackling this growing problem.

Soundbite Sessions

Date	Time	Title	Location	Type
Friday 15 April	11:40-12:00	Working with the press	Hall 3	Soundbite
Friday 15 April	13:35-13:55	Community organising	Hall 3	Soundbite
Saturday 16 April	12:40-13:00	Valued Worker Scheme	Hall 3	Soundbite
Saturday 16 April	13:10-13:30	Voice in Every Workplace	Hall 3	Soundbite
Saturday 16 April	13:35-13:55	Influencing politicians	Hall 3	Soundbite
Sunday 17 April	12:40-13:00	Stop Fire and Rehire	Hall 3	Soundbite
Sunday 17 April	13:10-13:30	Recruiting new members	Hall 3	Soundbite
Sunday 17 April	13:35-13:55	Using social media	Hall 3	Soundbite

Friday 15 April – 11:40-12:00

Soundbite: Working with the press

Trade unionists can be fearful of the media in part due to the bias that exists towards unions, but we should strive to put forward our alternative point of view. Understanding how the local media operates assists us in putting forward an alternative, particularly during industrial action.

This session will provide top tips on securing positive coverage for the NASUWT and our campaigns.

Friday 15 April – 13:35-13:55

Soundbite: Community organising

Hear Citizens UK set out how community organising is making a big difference in how we achieve change in society. Learn how, by building broad alliances, developing power, and holding decision makers to account, local injustices and challenges can be tackled – and

the role teachers and trade unionists can play in doing this.

Saturday 16 April – 12:40-13:00

Soundbite: Valued Worker Scheme

The Valued Worker Scheme is an initiative jointly promoted by the NASUWT and other education workforce unions, who recognise that there are already many employers that value their employees. Unfortunately, however, there are also many that do not.

The Valued Worker Scheme is a process for recognising those employers that do treat employees well and encouraging engagement with those that do not.

The Scheme promotes the adoption of policies and practices that demonstrate employers' commitment to treating all employees fairly, equitably and with dignity through the adoption of six principles. Attend this Soundbite session to learn more.

Saturday 16 April – 13:10-13:30

Soundbite: Voice in Every Workplace

This session will cover what we mean by a Voice in Every Workplace and why having an NASUWT voice in as many workplaces with NASUWT members as possible is so important. The discussion will encompass what we mean by 'active' members, but also how Union activity in the workplace can improve recruitment, retention, solidarity and collectivity amongst NASUWT members in their workplaces. The soundbite session will also look at some recent trends in NASUWT workplace activity the different roles that formal and informal members can undertake. It will further encourage a discussion about what prevents members getting involved and what would encourage members to engage in NASUWT activity.

Saturday 16 April – 13:35-13:55

Soundbite: Influencing politicians

Effectively influencing politicians, whether in Westminster, Stormont, Holyrood, Cardiff Bay or in town halls around the UK, is vital to the Union's work to secure a better deal for teachers.

This session will equip members with the knowledge and confidence to lobby politicians and to get the Union's policy demands across.

Sunday 17 April – 12:40-13:00

Soundbite: Stop fire and rehire

P&O recently grabbed the headlines for their cynical disregard of the law. Whereas P&O was misrepresented as being a case of fire and rehire (when in fact it was a case of employees being simply fired) the callous use of fire and rehire to



downgrade employees terms and conditions carries on every day in every workplace in Britain. The teaching profession is no exception.

Thompsons who represented USDAW in their recent successful challenge to Tesco's use of fire and RMT members at P&O has been working with the NASUWT in its campaign against fire and rehire. In this sound bite they will be exploring the legal background to fire and re hire and the tactics available to fight it.

Sunday 17 April – 13:10-13:30

Soundbite: Recruiting new members

This session will provide an overview of how the NASUWT has traditionally grown its membership and what recruitment and retention methods have been employed. The session will move on to look at recent trends in membership growth and how the pandemic has encouraged new ways of recruiting members. The discussion will encourage debate about how we combine traditional and new ways of communicating with teachers to encourage them to join the NASUWT and how every workplace has recruitment potential. The session will look at who recruits teachers into NASUWT membership and will look at any good practice tips.

Sunday 17 April – 13:35-13:55

Soundbite: Using social media

Social media is an increasingly important way of engaging with our members and the wider world. This session will equip members with the 'Dos and Don'ts' of social media and how to use these platforms to promote engagement in the Union and its campaigns.

Timetable of Wellness Sessions

Date	Time	Title	Location	Type
Friday 15 April	11:40-12:00	Mindfulness with Ron Prescott	Hall 3 Wellness Zone	Wellness
Friday 15 April	13:35-13:55	Seated Exercise with Amber Cahill	Hall 3 Wellness Zone	Wellness
Saturday 16 April	13:10-13:30	Music Therapy with Faye Bradbury	Hall 3 Wellness Zone	Wellness
Saturday 16 April	13:35-13:55	Tai Chi with Ron Prescott	Hall 3 Wellness Zone	Wellness
Sunday 17 April	13:10-13:30	Standing Yoga with Holly Wells	Hall 3 Wellness Zone	Wellness
Sunday 17 April	13:35-13:55	Bhangra Dance with Sohan Kailey	Hall 3 Wellness Zone	Wellness

Friday 15 April – 11:40-12:00

Mindfulness with Ron Prescott

Being aware of the present moment can be a fantastic tool to deal with stress and bring us a deeper connection with ourselves and our surroundings, therefore enabling us to achieve more with less time and improve productivity. Mindfulness can be practised through everyday events like the breathing, eating, being in nature and many more.

Friday 15 April – 13:35-13:55

Seated Exercise with Amber Cahill

These seated exercises aim to stretch and relax the body after sitting still for long

periods of time and help improve mobility. The benefits are increasing your blood flow, increasing your range of movement, improving posture and preventing body aches and pains. You can repeat the exercises from today in your own time to keep yourself moving.

Saturday 16 April – 13:10-13:30

Music Therapy with Faye Bradbury

In this session Faye will be using Native North American-style flute, bells and other instruments to create a soundscape. Music has the ability to uplift our sense of wellbeing and our emotional and mental states. It can assist us in relaxing, sleeping better and stress relief.

Saturday 16 April – 13:35-13:55

Tai Chi with Ron Prescott

Tai Chi is an ancient art form of a gentle style of exercise from China, being a combination of slow flowing movements and deep breathing to create a moving meditation to ease stress, clear the mind and boost energy levels. Normally done standing, Tai Chi can also be carried out sitting.

WELLNESS SESSIONS

Sunday 17 April – 13:10-13:30

Standing Yoga with Holly Wells

Yoga is an ancient form of exercise that focuses on strength, flexibility and breathing to boost physical and mental wellbeing. In this session we will be doing some gentle all over stretching to help with concentration, stress and pain relief, which will increase mobility and can reset posture.

Sunday 17 April – 13:35-13:55

Bhangra Dance with Sohan Kailey

Join in this vibrant and fun dance workshop and learn basic dance movements from digging and planting to celebration moves. There will be easy-to-follow actions and lots of ideas to take away and link into the curriculum. Bhangra the farming celebration that combines storytelling and dance.

Creating a better financial future for teachers

WESLEYAN
we are all about you

For over 180 years we have helped trusted professionals like you achieve a brighter financial future, enabling you to focus on the vital work you do for society.

Our Specialist Financial Advisers from Wesleyan Financial Services have knowledge on a range of topics including the intricacies of the Teachers' Pension Scheme, retirement planning, understanding tax implications, savings, investments, mortgages, and much more.



Mutual status

As a mutual with no shareholders, we work to support the people and professions that have made us who we are today.



£3.5 million

Awarded to good causes across the UK, including £500,000 directly to education charities and schools across the UK.



Covid response

£65,000 donated to Titan Partnership, to help purchase IT equipment; enabling pupils to continue accessing lessons throughout the pandemic.



UK National Literacy Trust

Partnering with the National Literacy Trust, to launch its new Teacher Wellbeing website.

Speak to a specialist

To find out more about how we support education professionals, please visit wesleyan.co.uk/teachers or call **0800 294 8314**.

Wesleyan Group offers Financial advice: Retirement Planning • Investing • Funding • Insurance

   Follow us for regular updates on social media

Advice is provided by Wesleyan Financial Services Ltd.

'WESLEYAN' is a trading name of the Wesleyan Group of companies.

Wesleyan Financial Services Ltd (Registered in England and Wales No. 1651212) is authorised and regulated by the Financial Conduct Authority and is wholly owned by Wesleyan Assurance Society. Wesleyan Assurance Society is authorised by the Prudential Regulation Authority and regulated by the Financial Conduct Authority and the Prudential Regulation Authority. Incorporated in England and Wales by Private Act of Parliament (No. ZC145). Registered Office: Colmore Circus, Birmingham B4 6AR. Telephone calls may be recorded for monitoring and training purposes.

TEA AD 0022 03/22



Welcome to the NASUWT Exhibition

The exhibition is an integral part of our Conference, and has been designed with you in mind. You will have the opportunity to meet our exhibitors, participate in some thought-provoking and educational sessions and reconnect with colleagues. A range of activities will be hosted, which will include: the celebration event on Friday evening, soundbites, which are mini-educational sessions, and wellness sessions that will be running in the lunch breaks. Make sure you download our new Conference app for further information.

Local Media – Exhibition Hall

The Local Media Stand is equipped to enable representatives to promote the NASUWT within their local areas by preparing press releases and organising radio interviews with their own press contacts. Staff will be on hand to support this process and the stand can be found in Hall 3, Friday – Sunday, and will then be relocated to the registration area on Monday.

National Stand – Exhibition Hall

The National Stand is used in exhibitions throughout the year to promote NASUWT policy and to recruit new members. The NASUWT stand will be showcasing the campaign for a better deal for teachers and how members can organise to win, including the tools and support available. Hear about the commitment to racial justice, including the work around the Union's Big Conversation, anti-racism work and decolonising the curriculum.

We are disappointed that the Secretary of State for Education, the Rt Hon Nadhim Zahawi MP, is unable to attend Conference in person. You will undoubtedly have questions you might have asked the Secretary of State for Education. To find out how you can ask these, please visit the NASUWT National Stand.

VR Gaming

We are hosting a virtual experience like no other in Hall 3 for the duration of the exhibition at Conference. Each day, we will host a new gaming experience for members to get involved in and test their skills. Whether it's walking the plank or a game of beat sabre, it is sure to get you feeling energised and be an opportunity for healthy competition amongst attendees. Located next to the NASUWT national stand, do pop along to see what all the fuss is about.

Soundbite Zone

Mini-educational sessions will be running throughout. Visit page 17 for more details.

Wellness Zone

Wellness sessions will also be running in the lunch breaks. Please see below a brief outline of what will be on offer.

Mindfulness

Being aware of the present moment can be a fantastic tool to deal with stress and bring us a deeper connection with ourselves and our surroundings, thus enabling us to achieve more with less time, therefore improving productivity. Mindfulness can be practised through everyday events like the breathing, eating, being in nature and many more.

Seated Exercise

These seated exercises aim to stretch and relax the body after sitting still for long periods of time and help improve mobility. The benefits are increasing your blood flow, increasing the range of movement, improving posture and preventing body aches and pains. You can repeat the exercises from today in your own time to keep yourself moving.

Music Therapy

In this session, Faye will be using Native North American-style flute, bells and other instruments to create a soundscape. Music has the ability to uplift our sense of wellbeing and our emotional and mental states. It can assist us in relaxing, sleeping better and stress relief.

Tai Chi

Tai Chi is an ancient art form of a gentle style of exercise from China, being a combination of slow-flowing movements and deep breathing to create a moving meditation to ease stress, clear the mind and boost energy levels. It is normally done standing, but Tai Chi can also be carried out sitting.

Standing Yoga

Yoga is an ancient form of exercise that focuses on strength, flexibility and breathing to boost physical and mental wellbeing. In this session we will be doing some gentle, all-over stretching to help with concentration, stress and pain relief, which will increase mobility and can reset posture.

Bhangra Dance

Join in this vibrant and fun dance workshop and learn basic dance movements from digging and planting to celebration moves. There will be easy-to-follow actions and lots of ideas to take away and link into the curriculum. Bhangra is the farming celebration that combines storytelling and dance.

Competition – details of the in-app game experience

The in-app game experience is a great way to learn how to use the app in a short period of time and discover new networking opportunities. You will earn points for exploring the app and earning achievements and get a place on the leader board against other event attendees. Everyone wins by playing, but only a few earn the right to be top of the leader board.

Those who make it to the top of the leader board by Monday 18 April at 12 noon will be entered into the leader board prize draw for a chance to win the irresistible Cadbury's Ultimate Easter Basket.

Please note:

- the game is accessible immediately, and can be played at any time;
- the leader board ends when the event ends;
- everyone can play. Just download the app and start exploring.

We want you to engage with the app, event, and other attendees, not spam people. Bad behaviour can get you banned from the leader board.

Chill and re-charge

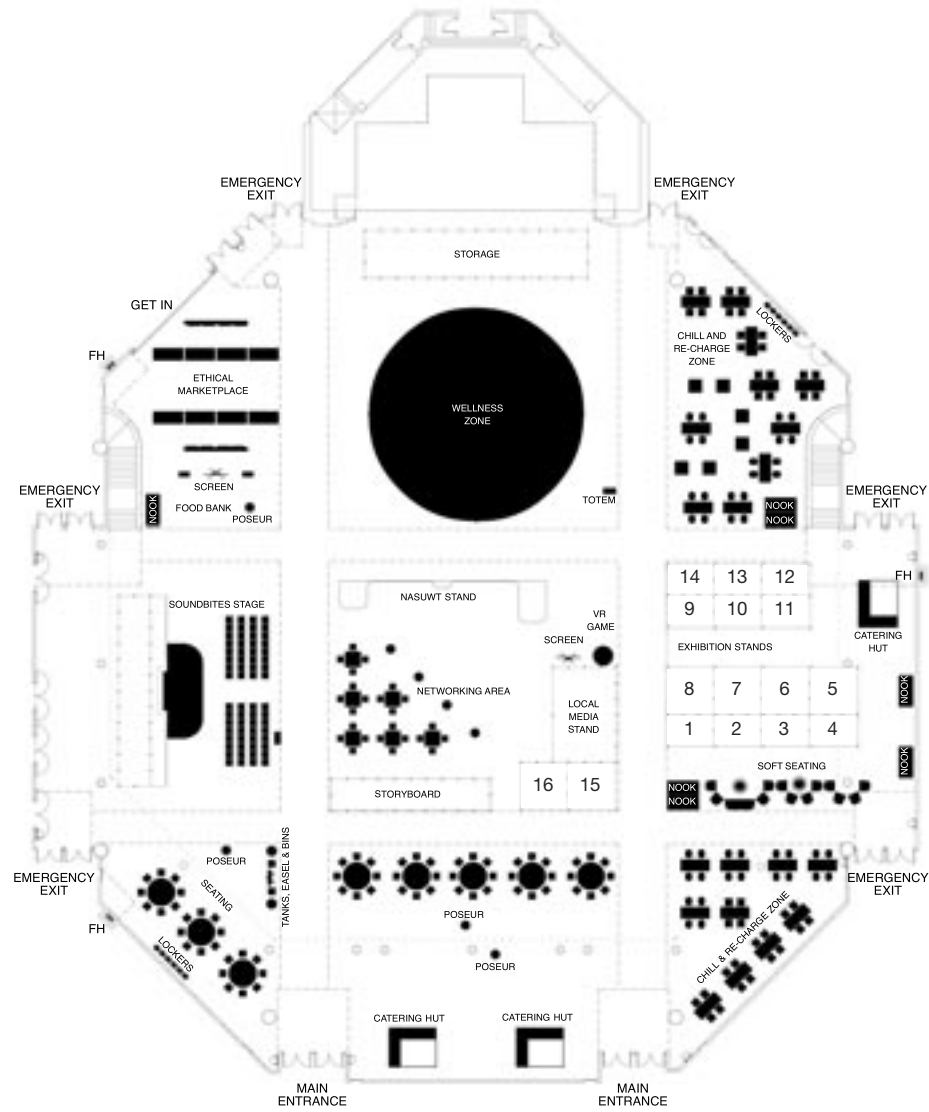
Within the exhibition, you will be able to take time to recharge between sessions and visit the wellbeing, relax and recharge zones which will include facilities to recharge your devices. The opportunity to charge your device will be available for the duration of Conference. Please stop by the relax and recharge zone to do exactly that.

Nook Pods/networking

During Conference, you will have access to our Nook Pods which are flexible, acoustic safe spaces for you to catch up on some last-minute emails, hold a quick meeting or take a phone call. All of our pods offer a personal and intimate feeling, manage noise and disruption and allow you to tune the lighting to your needs. Located around Hall 3, we welcome you to come and try for yourself:
<https://nookpod.com/2021/02/08/cool-schools-how-nook-is-helping-redefine-space-and-behaviour-in-schools/>.



Exhibition Floor Plan



List of Exhibitors

British Youth Music Theatre
 Burma Campaign UK
 Clarkeprint
 Education and Solidarity Network
 EqualiTeach
 FFLAG – Supporting families and our LGBT+ loved ones with Pride
 Federation of Retired Members' Associations
 Justice for Colombia
 NASUWT National Stand
 NASUWT Local Media
 Palestine Solidarity Campaign
 Show Racism the Red Card
 Stand up to Racism
 SWGFL
 Thompsons Solicitors
 UIA Mutual
 UK National Work-Stress Network
 VSO International

Ethical Market Place

Ashley Hinds
 Bookmarks Bookshop
 Dragonfly
 Hayley's Healthy Living
 Nipperbout
 Stacey's Story Books in Partnership with Usborne
 The Bournville Candle Company
 Trussell Trust Food Bank

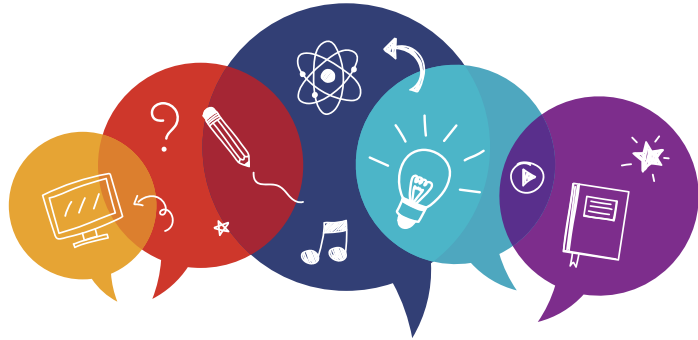
Virtual Exhibitors

Chartered College of Teaching
 CND Peace Education
 DESCY
 Durham Miners' Gala
 Hazards
 Meet Glasgow
 Morning Star
 Nook Pods
 Pellacraft
 Tolpuddle Martyrs Festival



Free legal services

for NASUWT members



NASUWT members and family members using the union legal service are guaranteed:

- Expert help
- Lawyers who understand your workplace
- 100% compensation
- No legal fees

...terms that non-union lawyer can't match.

Find out more at our stand.

www.thompsonstradeunion.law/nasuwt
0808 100 2221

NASUWT
The Teachers' Union

T THOMPSONS
SOLICITORS
STANDING UP FOR YOU

100
YEARS
1921-2021

Save the Date

Annual Conference 2023

The SEC in Glasgow is
delighted to be hosting the
NASUWT Annual Conference
over the Easter weekend in
2023.

FFLAG



Supporting families and our
LGBT+ loved ones with pride

Family support is one of the biggest indicators of positive outcomes for LGBT+ young people. In partnership with this, championing diversity at school benefits all pupils. Let's make school a safe and inclusive environment for everyone!

Visit FFLAG's stand and check out our resources, including **'A Guide for Family and Friends'** and **'How Do I Tell my Parents?'**.

www.fflag.org.uk



families are all different
and that's OK





Play the in-app game to WIN

DETAILS OF THE IN-APP GAME EXPERIENCE

The in-app game experience is a great way to learn how to use the app in a short period of time and discover new networking opportunities.

You will earn points for exploring the app and earning achievements and get a place on the leader board against other event attendees.

Everyone wins by playing, but only a few earn the right to be top of the leader board.

Those who make it to the top of the leader board by **Monday 18 April at 12 noon** will be entered into the leader board prize draw for a chance to **win** the irresistible **Cadbury's Ultimate Easter Basket**.



App URL: <https://eur.crowd.cc/nasuwt22>
Webpage URL: <https://eur.crowd.cc/s/JZi>

PLEASE NOTE:

- the game is accessible immediately and can be played at any time;
- the leader board ends when the event ends; and
- everyone can play. Just download the **NASUWT Conferences and Events app** and start exploring.

We want you to engage with the app, event, and other attendees, not spam people. Bad behaviour can get you banned from the leader board.

NASUWT

The Teachers' Union

www.tuc.org.uk/wmd



Supports

**International Workers' Memorial Day
- 28 April 2022**

“Make safe and healthy work a fundamental right”

The theme for Workers' Memorial Day this year is: Make safe and healthy work a fundamental right. Every year on April 28th International Workers' Memorial Day (IWMD) commemorates workers who are killed or injured at work.

Purple Ribbons will be available for sale from the Information Stand in the Foyer.

★ Trustpilot  Correct as at 01.04.22
Trustscore 4.5 | 1,438 reviews

uia **NASUWT**
mutual **APPROVED**
insurance for trade union members

HOME INSURANCE WITH A TRIPLE PROMISE



FAIR PRICES
Our prices are tailored to you and your home based on your requirements and circumstances.

FLEXIBLE COVER
We include alternative accommodation as standard, and flexible options to tailor cover.

FRIENDLY SERVICE
We have UK based claims handlers plus the option of interest free monthly payments.

As a mutual, UIA is owned by its policyholders, not by shareholders. That means any surplus we make is reinvested for the benefit of all our customers.

It's why we include FREE Home Tuition Cover as standard for NASUWT members along with 'new for old' contents cover*. Call today and we promise you fair prices, flexible cover and friendly service.

Get your quote today

Call **0800 389 1029*** and quote **NASUWT22**
Visit nasuwtinsurance.co.uk/NASUWT22



Scan me

* Lines are open 9am-6pm Mon-Fri (subject to change due to Covid-19 restrictions).
^ Except clothing and household linen.

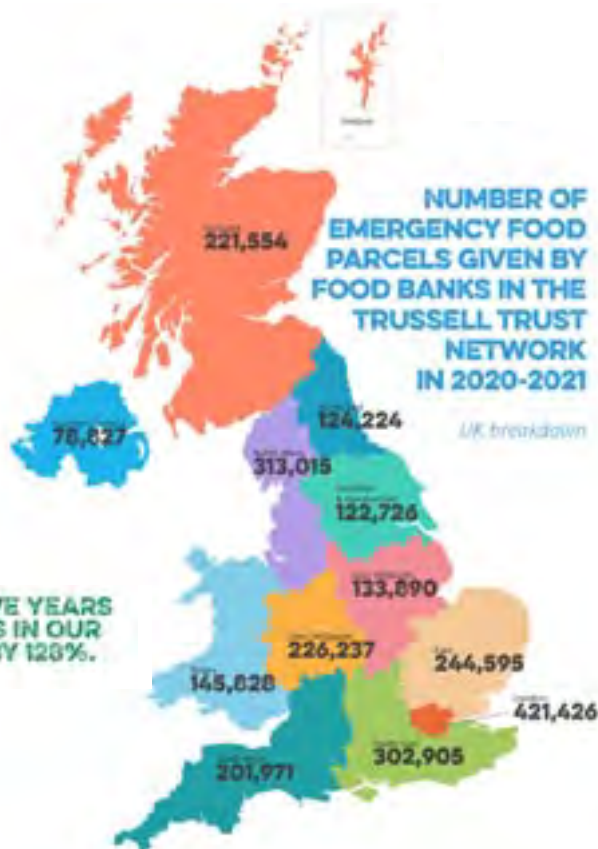
UIA Mutual is a trading name of UIA (Insurance) Ltd. UIA (Insurance) Ltd is a member of the Association of British Insurers and is a registered society under the Co-operative and Community Benefit Societies Act 2014 (Registration Number 2898R). Principal Office in England at Kings Court, London Road, Stevenage, Herts SG1 2TP. The NASUWT is an Introducing Representative of UIA (Insurance) Ltd, which is authorised by the Prudential Regulation Authority and regulated by the Financial Conduct Authority and the Prudential Regulation Authority (FRN 110863).





NASUWT
The Teachers' Union

Between 1 April 2020 and 31 March 2021, food banks in the Trussell Trust's UK-wide network distributed 2.5 million emergency food parcels to people in crisis, a 33% increase on the previous year. 980,000 of these went to children.



NASUWT
The Teachers' Union

virtual foodbank

You can donate from **£1**
to **£10**

to our virtual foodbank

by texting **TRUSSELL**
plus the amount **1, 2, 3, 4, 5** or **10**
to **70085** e.g. **TRUSSELL 5**

As always, we are enormously grateful
for your kind donations.



NASUWT
The Teachers' Union

