



# AWESOME TEACHER

STUDENT TEACHER  
HANDBOOK



**NASUWT**  
CYMRU



## + HELP?

Need advice and support on your teaching placement?

We are here to help.

CALL 029 2054 6080

Weekdays 8.30am–5.30pm

EMAIL [CYMRU-WALES@MAIL.NASUWT.ORG.UK](mailto:CYMRU-WALES@MAIL.NASUWT.ORG.UK)

SCAN FOR MORE



# WELCOME<sup>+</sup>

**NASUWT** is a democratic union and **the only teachers' union** to represent members in all parts of the UK. By solely representing teachers, NASUWT is also the most effective union representing your interests! That's because our leadership consists entirely of qualified and experienced teachers, elected by members.

We recognise that everyone working in education deserves specialist support for their respective roles. That's why NASUWT is committed to working with unions that possess the necessary expertise and skills to represent non-teaching staff, with their broad range of contracts and diverse responsibilities. This allows NASUWT to focus on the issues important to you – the teacher.

# DEVELOPMENT

## 1. PERSONAL

We offer **Free** webinars and seminars to complement your teacher training and first years of teaching, helping you with:

- Interview skills
- Job application form tips
- Behaviour management
- Working assertively
- Time management
- Induction rights
- Staying safe online
- Voice care and wellbeing

I feel positive about my next step in teaching and ready to embrace the challenge

Lovely people, practical, positive sessions

Perfect for new teachers and aiming to increase my confidence before I start my first post

I have gained insight and perspective into how far I have come



## 2. PROFESSIONAL

We also offer a range of **Free** professional development events throughout the year, timed to offer you the right kind of support, just when you need it.



BLACK TEACHERS' CONSULTATION CONFERENCE



LGBT+ TEACHERS' CONSULTATION CONFERENCE



DISABLED TEACHERS' CONSULTATION CONFERENCE



WOMEN TEACHERS' CONSULTATION CONFERENCE



LEADERSHIP CONSULTATION CONFERENCE



YOUNG TEACHERS' CONSULTATION CONFERENCE



SUPPLY TEACHERS' SEMINAR

We'll email you invitations to relevant events taking place during your training, so please make sure we have your up-to-date contact details!

### FINAL TERM OF TRAINING

The job application and interview process can be daunting, so we'll arrange for an experienced recruitment professional, with a background in shortlisting and interviews, to share their experience with you. They'll also provide you with tips on how to get your ideal job!

### BEFORE YOUR FIRST TERM

In the summer after you qualify, NASUWT will invite you to our free development days and webinars on: behaviour management; voice care and wellbeing; your induction rights; staying safe online.

### WINTER OF FIRST ACADEMIC YEAR

At the end of your first term of teaching, NASUWT will invite you to a face-to-face development and training day. Sessions will be relevant to current issues in teaching but will include such topics as: dealing with trauma in pupils; effective time management; working assertively; your rights in your second year of teaching.

### SUMMER OF FIRST ACADEMIC YEAR

In the summer term, the NASUWT development day will help you revisit your experiences of your first year of teaching and help prepare you for the year ahead.

### NATIONAL CONSULTATION CONFERENCES

Once you've qualified and finished your initial teacher training, you'll be able to attend other consultation conferences aimed at supporting specific groups of members. These events: are **Free to attend**; provide a **safe space**; provide **professional development opportunities**; provide **networking opportunities**; contribute towards the **NASUWT agenda**.



# YOUR RIGHTS

**As a student undertaking initial teacher training, you have rights and entitlements that NASUWT can help you understand.**

## **EXTENDING TRAINING**

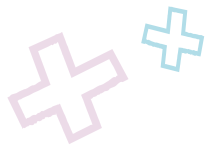
If you miss placements or significant parts of your training as a result of illness or unexpected life events, you may be able to negotiate an extension to your training year with your training provider. You may wish to involve your student union with any course issues.

## **ADDITIONAL IN-PLACEMENT SUPPORT**

If you feel you are not receiving the support from your placement school to which you are entitled, contact NASUWT for advice. We can help you put your concerns in writing to ensure you have an audit trail.

## **ALLEGATIONS AND COMPLAINTS**

We are here to support you through informal and formal investigations. Our dedicated advisors and representatives are here to provide confidential advice and support if you receive a complaint or allegation while on placement.



# BEHAVIOUR MANAGEMENT

You'll need to gain confidence, trust and respect from your pupils as an able practitioner, while getting the lowdown on the class/subject you are going to teach, including any issues or pupil needs.

It is also essential that you familiarise yourself with the behaviour policy and ensure your behaviour management plan matches it.





## Maintain order and discipline in the classroom. Here's a few tips!

### 1. SET BOUNDARIES

All children and young people like order and good discipline, because it helps them understand what is required of them. From the outset, tell your class what you expect of them and what they can expect from you. Also spend some time setting out your personal behaviour policy.

### 2. USE POSITIVE LANGUAGE

Tell pupils what you want them to do, not what you don't want them to do! The message is: 'This is the way we behave in my classroom'. Plus – the use of the word 'thanks' after an instruction is much more powerful than the word 'please' before.

### 3. STRESS THAT WE ALL MAKE MISTAKES

Making mistakes is how we learn. So allow your pupils to get answers wrong, to learn together and to solve problems together. That way they won't be so embarrassed.

### 4. MAKE SANCTIONS FAIR AND REWARDS REGULAR

Children and young people recognise fairness and prefer to be treated as the individuals they are, rather than just a part of a difficult group! So keep your sanctions doable and commensurate with the rule that has been flouted. And reward appropriate behaviour regularly, with a smile, a stamp on their work and a word of encouragement.

### 5. BE ASSERTIVE

You need to be assertive in both your verbal language and your body language. Sarcastic teachers don't get the best out of their learners; kind but firm teachers do! So always speak clearly and confidently, without raising your voice.

### 6. DEAL WITH ANGER IN THE CLASSROOM

It's impossible to deal with an adult or child when they are in a temper. The best response is to remain calm and express your willingness to help the person once they are ready. Try to keep control of your own emotions whatever the other person might be feeling and, if possible, thank the rest of the group for getting on with their work. The class wants to see that you are in charge of the situation.

### 7. REMEMBER SENSE OF HUMOUR

Try to incorporate humour into your teaching and to recognise that of your pupils. It's hard for anyone to get angry or aggressive if they are laughing.

NASUWT has produced a range of guidance on managing classroom behaviour, which is applicable to all teachers throughout their careers.

Visit [www.nasuwt.org.uk](http://www.nasuwt.org.uk)



# THERE'S MORE..

## NASUWT OFFERS



### Free Student Membership

**Confidential advice**

**Cross-sector representation**

**Professional development throughout your training, first year of teaching and beyond**

**A range of benefits, including discounts on services and activities**

## FACING PROBLEMS?

If facing any difficulties, try to address concerns at the earliest opportunity

Speak to your tutor, training provider or mentor

Call NASUWT for confidential advice if problems persist

## WHEN TRAINING



### Free Membership

Support on placements

Training and lectures through your training provider


Lifestyle benefits, discounts and savings



**SAVE** on new Vauxhall cars with the Vauxhall Partners Scheme

**SAVE** up to £120 on a week's summer holiday with Hoseasons this summer

**SAVE** up to £75 on family tickets to Alton Towers resort, just by booking in advance



## FINAL YEAR OF TRAINING

Finding Your First Teaching Post lecture to help you stand out for the right reasons and obtain your ideal job

Access to lifestyle benefits and services

Legal advice and support

## WHEN YOU QUALIFY

★ **£1 Membership**

*Starting Out*, NASUWT's guide for new teachers

★ **Free CPD provision**

Advice, support and representation for work-related issues

Induction planner to help guide you through the induction process

## FIRST ACADEMIC YEAR

★ **£1 Membership**

★ **Free** development event in first term

★ **Free** development seminar or webinar in summer term

Active engagement with you, the members, to decide union policy

Access to network of local volunteers and representatives

CPD training for members

Professional legal advice and representation

Free conferences and events covering current hot topics in education

Development courses and support for members wishing to become involved in the democratic structure of NASUWT

**SAVE** on gym membership, digital fitness subscriptions and more via YourFitnessClub

**EARN** up to £55 worth of shopping vouchers simply by inviting four colleagues to join NASUWT

# SAVE MORE...+

As an **NASUWT MEMBER**, you can take advantage of over **250 DISCOUNTS** and **EXCLUSIVE OFFERS** on your home, car, electrical goods, eating out, leisure activities, retail gift cards, holidays and travel.

Our twice-monthly **Benefits and Services eZine** features exclusive deals, discounts and free prize draws.

If you do not receive this, please

**CALL 029 2054 6080**  
Weekdays 8.30am–5.30pm

**EMAIL**  
**MEMBERSHIP@MAIL.NASUWT.ORG.UK**

A small proportion of these offers will easily cover the cost of your NASUWT subscription and help you save more.



**And, if you recruit other teachers to NASUWT, you can get Love2Shop vouchers too!**

Check out **[www.nasuwtbenefits.co.uk](http://www.nasuwtbenefits.co.uk)** or **scan the QR code** on your membership card.



## GET INVOLVED

Encourage fellow student teachers to join NASUWT.

Raise issues about teacher placements with the Union.

Speak to NASUWT about organising events that student teachers are interested in.

Promote free professional development events to fellow students.

**NASUWT.ORG.UK/GETTINGACTIVE**

## DON'T MISS OUT!

### UPDATE YOUR DETAILS & FOLLOW US!

Changing address? Changing school? Moving house?  
Let us know:

**NASUWT.ORG.UK**

And, for all the latest news, advice and events from us,  
just follow us on social media. Look for @nasuwt on:





# AWESOME TEACHER

LLAWLYER ATHRAWON  
DAN HYFFORDDIANT



**NASUWT**  
CYMRU



## + HELP?

Angen cyngor a chefnogaeth ar eich lleoliad addysgu?

Rydyn ni yma i helpu

**FFONIWCH** 029 2054 6080

Dyddiau'r wythnos 8.30am-5.30pm

**EBOSTIWCH** [CYMRU-WALES@MAIL.NASUWT.ORG.UK](mailto:CYMRU-WALES@MAIL.NASUWT.ORG.UK)

**SGANIWCH** AM FWY



# CROESO+

Mae **NASUWT** yn undeb democrataidd a'r unig undeb athrawon i gynrychioli aelodau ym mhob rhan o'r DU. Trwy gynrychioli athrawon yn unig, NASUWT hefyd yw'r undeb mwyaf effeithiol sy'n gwarchod eich hawliau! Mae hynny oherwydd bod ein harweinyddiaeth yn cynnwys athrawon cymwys a phrofiadol, wedi'u hethol gan aelodau.

Rydym yn cydnabod bod pawb sy'n gweithio ym myd addysg yn haeddu cymorth arbenigol ar gyfer eu rolau priodol. Dyna pam mae NASUWT wedi ymrwymo i weithio gydag undebau sy'n meddu ar yr arbenigedd a'r sgiliau angenrheidiol i gynrychioli staff nad ydynt yn addysgu, gyda'u hystod eang contractau a'u cyfrifoldebau amrywiol. Mae hyn yn galluogi NASUWT i ganolbwyntio ar y materion sy'n bwysig i chi - yr athro.



# DATBLYGU

## 1. PERSONOL

Rydym yn cynnig gweminarau a seminarau **am ddim** i ategu eich hyfforddiant a'ch blynyddoedd cyntaf o addysgu, gan eich helpu gyda:

- Sgiliau cyfweiliad
- Rheoli ymddygiad
- Awgrymiadau ar gyfer ffurflenni cais am swydd
- Gweithio'n bendant
- Rheoli amser
- Hawliau anwytho
- Cadw'n ddiogel ar-lein
- Gofal llais a lles

Rwy'n teimlo'n bositif am fy ngham nesaf mewn addysg ac yn barod i groesawu'r her

Pobl hyfryd, sesiynau ymarferol, positif

Perffaith ar gyfer athrawon newydd ac ar gyfer gwella fy hyder cyn i mi ddechrau fy swydd gyntaf

Rydw i wedi hunain werthuso a chael persbectif ar ba mor bell rydw i wedi dod



## 2. PROFFESIYNOL

Rydym hefyd yn cynnig amrywiaeth o ddigwyddiadau datblygiad proffesiynol **am ddim** trwy gydol y flwyddyn, wedi'u hamseru i gynnig y math cywir o gefnogaeth i chi, ar yr adeg perffaith yn eich taith.



Byddwn yn e-bostio gwahoddiadau atoch i ddigwyddiadau perthnasol a gynhelir yn ystod eich hyfforddiant, felly gwnewch yn siŵr bod gennym eich manylion cyswllt diweddaraf!



### TYMOR OLAF O HYFFORDDIANT

Gall y broses ymgeisio am swydd a chyfweldau fod yn frawychus, felly byddwn yn trefnu i weithiwr recriwtio proffesiynol profiadol, sydd â chefnidir mewn llunio rhestr fer a chyfweliadau, rannu eu profiad gyda chi. Byddant hefyd yn rhoi awgrymiadau i chi ar sut i gael eich swydd ddelfrydol!



### CYN Y TYMOR CYNTAF

Yn yr haf ar ôl i chi gymhwyso, bydd NASUWT yn eich gwahodd i'n diwrnodau datblygu a gweminarau rhad ac am ddim ar: rheoli ymddygiad; gofal llais a lles; eich hawliau anwytho; aros yn ddiogel ar-lein.



### GAEAF Y FLWYDDYN ACADEMAIDD GYNTAF

Ar ddiwedd eich tymor cyntaf o addysgu, bydd NASUWT yn eich gwahodd i ddiwrnod datblygu a hyfforddi wyneb yn wyneb. Bydd y sesiynau'n berthnasol i faterion cyfoes ym myd addysg gan gynnwys pynciau fel: delio â thrawma mewn disgyblion; rheoli amser yn effeithiol; gweithio'n bendant; eich hawliau yn eich ail flwyddyn o addysgu.



### HAF Y FLWYDDYN ACADEMAIDD GYNTAF

Yn nhymor yr Haf, bydd diwrnod datblygu NASUWT yn eich helpu i ailymweld â'ch profiadau o'ch blwyddyn gyntaf o addysgu a helpu i'ch paratoi ar gyfer y flwyddyn i ddod.



### CYNADLEDDAU YMGYNGHOROL CENEDLAETHOL

Unwaith y byddwch wedi cymhwyso a gorffen eich hyfforddiant cychwynnol athrawon, byddwch yn gallu mynychu cynadleddau ymgynghori eraill gyda'r nod o gefnogi grwpiau penodol o aelodau. Mae'r digwyddiadau hyn: AM DDIM i'w mynychu; darparu lle diogel; darparu cyfleoedd datblygiad proffesiynol; darparu cyfleoedd rhwydweithio; cyfrannu at agenda NASUWT.



# EICH HAWLIAU

**Fel myfyriwr sy'n derbyn hyfforddiant cychwynnol athrawon, mae gennych hawliau y gall NASUWT eich helpu i'w deall.**

## **YMESTYN HYFFORDDIANT**

Os byddwch yn colli lleoliadau neu rannau sylweddol o'ch hyfforddiant o ganlyniad i salwch neu ddigwyddiadau bywyd annisgwyl, efallai y byddwch yn gallu negodi estyniad i'ch blwyddyn hyfforddi gyda'ch darparwr hyfforddiant. Efallai y byddwch am ymwneud â'ch undeb myfyrwyr gyda unrhyw broblemau cwrs.

## **CYMORTH YCHWANEGOL MEWN LLEOLIAD**

Os ydych yn teimlo nad ydych yn cael y cymorth y mae gennych hawl iddo gan eich lleoliad, cysylltwch â NASUWT am gyngor. Gallwn eich helpu i roi eich pryderon yn ysgrifenedig i sicrhau bod gennych gofnod ysgrifenedig.

## **HONIADAU A CHWYNION**

Rydym yma i'ch cefnogi trwy ymchwiliadau anffurfiol a ffurfiol. Mae ein hymgyngorwyr a chynrychiolwyr ymroddedig yma i roi cyngor a chefnogaeth gyfrinachol os byddwch yn derbyn cwyn neu honiad tra ar leoliad.





# RHEOLI YMDDYGIAD

Bydd angen i chi fagu hyder, ymddiriedaeth a pharch gan eich disgyblion fel ymarferydd galluog, tra'n cywain gwybodaeth ar y dosbarth/pwnc rydych chi'n mynd i'w addysgu, gan gynnwys unrhyw faterion neu anghenion disgyblion.

Bydd angen i chi ymglyfarwyddo â'r polisi ymddygiad a sicrhau bod eich cynllun rheoli ymddygiad yn cyd-fynd ag ef.





## Bydd angen i chi hefyd gadw trefn a disgyblaeth yn yr ystafell ddosbarth. Dyma sut!

### 1. GOSOD FFINIAU

Mae pob plentyn a pherson ifanc yn hoffi trefn a disgyblaeth dda, oherwydd mae'n eu helpu i ddeall yr hyn sy'n ofynnol ganddynt. O'r cychwyn cyntaf, dywedwch wrth eich dosbarth beth rydych chi'n ei ddisgwyl ganddyn nhw a beth allan nhw ei ddisgwyl gennych chi. Hefyd cymrwch peth amser i nodi eich polisi ymddygiad personol.

### 2. DEFNYDDIO IAITH GADARNHAOL

Dywedwch wrth y disgyblion beth rydych chi eisiau iddyn nhw ei wneud, nid beth dydych chi ddim eisiau iddyn nhw ei wneud! Y neges yw: 'Dyma'r ffordd rydyn ni'n ymddwyn yn fy ystafell ddosbarth'. Hefyd – mae defnyddio'r gair 'diolch' ar ôl cyfarwyddyd yn llawer mwy pwerus na'r gair 'os gwelwch yn dda' o'r blaen.

### 3. SYLW EIN BOD I BAWB YN GWNEUD CAMGYMERIADAU

Rydym yn dysgu drwy wneud camgymeriadau. Felly caniatewch i'ch disgyblion gael atebion yn anghywir, i ddysgu gyda'ch gilydd ac i ddatrys problemau gyda'ch gilydd. Fel hyn ni fydd cymaint o gywilydd arnyn nhw.

### 4. GWNEUD COSBAU YN DEG A GWOBRAU YN RHEOLAIDD

Mae plant a phobl ifanc yn cydnabod tegwch ac mae'n well ganddynt gael eu trin fel unigolion yn hytrach na dim ond yn rhan o grŵp anodd! Cadwch eich cosbau yn ymarferol ac yn gymesur â'r rheol sydd wedi'i hanwybyddu. Gwobrwywch ymddygiad priodol yn gyson, gyda gwên, stamp ar eu gwaith a gair o anogaeth.

### 5. BYDDWCH YN BENDANT

Mae angen i chi fod yn bendant yn eich iaith eiriol ac iaith eich corff. Nid yw athrawon coeglyd yn cael y gorau o'u dysgwyr; mae athrawon caredig ond cadarn yn gwneud hynny! Felly siaradwch yn glir ac yn hyderus bob amser, heb godi eich llais.

### 6. DELIO Â DICTER YN Y DOSBARTH

Mae'n amhosib delio ag oedolyn neu blentyn pan fyddan nhw wedi gwylltio. Yr ymateb gorau yw aros yn ddigynnwrf a mynegi eich parodrwydd i helpu'r person unwaith y bydd yn barod. Ceisiwch gadw rheolaeth ar eich emosiynau eich hun beth bynnag mae'r person arall yn ei deimlo ac, os yn bosibl, diolch i weddill y grŵp am fwrw ymlaen â'u gwaith. Mae'r dosbarth eisiau gweld mai chi sydd yn rheoli'r sefyllfa.

### 7. COFIWCH EICH HIWMOR

Ceisiwch ymgorffori hiwmor yn eich addysgu ac adnabod hiwmor eich disgyblion. Mae'n anodd i unrhyw un fynd yn ddig neu'n ymosodol os ydyn nhw'n chwerthin.

Mae NASUWT wedi cynhyrchu ystod o ganllawiau ar reoli ymddygiad yn yr ystafell ddosbarth, sy'n berthnasol i bob athro drwy gydol eu gyrfa.

Ewch i [www.nasuw.org.uk](http://www.nasuw.org.uk)



# MAE MWY...



## CYNIGION NASUWT

★ Aelodaeth Myfyrwyr  
am ddim

Cyngor cyfrinachol

Cynrychiolaeth  
traws-sector

Datblygiad proffesiynol  
trwy gydol eich  
hyfforddiant, blwyddyn  
gyntaf eich addysgu a  
thu hwnt

Amrywiaeth o  
fuddion, gan gynnwys  
gostyngiadau ar  
wasanaethau a  
gweithgareddau

## GWYNEBU PROBLEMAU?

Os ydych yn wynebu  
unrhyw anawsterau,  
ceisiwch fynd i'r afael  
â phryderon cyn gynted  
â phosibl

Siaradwch â'ch tiwtor,  
darparwr hyfforddiant  
neu fentor

Ffoniwch NASUWT am  
gyngor cyfrinachol os  
bydd problemau'n parhau

## WRTH HYFFORDDI

★ Aelodaeth rhad ac  
am ddim

Cefnogaeth ar leoliadau

Hyfforddiant a darlithoedd  
trwy eich darparwr  
hyfforddiant


Buddiannau bywyd  
hamdden, gostyngiadau  
ac arbedion

+

**ARBED** ar geir Vauxhall  
newydd gyda Chynllun  
Vauxhall Partners

**ARBEDWCH** hyd at £120  
ar wythnos o wyliau haf  
gyda Hoseasons eleni

**ARBEDWCH** hyd at £75  
ar docynnau teulu i Alton  
Towers, dim ond drwy  
archebu ymlaen llaw



## BLWYDDYN OLAF O HYFFORDDIANT AR OL CYMHWYSO

### ★ Aelodaeth o £1

Darlith Finding Your First Teaching Post i'ch helpu i amlygu eich hunain am y rhesymau cywir a chael eich swydd ddelfrydol

Mynediad at fuddion a gwasanaethau bywyd hamdden

Cyngor a chefnogaeth gyfreithiol

*Starting Out*, canllaw NASUWT ar gyfer athrawon newydd

### ★ Darpariaeth DPP am ddim

Cyngor, cefnogaeth a chynrychiolaeth ar gyfer materion yn ymwneud â gwaith

Cynllunydd Anwytho i helpu i'ch arwain drwy'r broses anwytho

## BLWYDDYN ACADEMAIDD GYNTAF

### ★ Aelodaeth o £1

★ Digwyddiad datblygu **am ddim** yn y tymor cyntaf

★ Seminar neu weminar datblygu **am ddim** yn nhymor yr haf

Ymgysylltu gweithredol â chi, yr aelodau, i benderfynu ar bolisi undeb

Mynediad i rwydwaith o wirfoddolwyr a chynrychiolwyr lleol

Hyfforddiant DPP i aelodau

Cyngor a chynrychiolaeth gyfreithiol broffesiynol

Cynadleddau a digwyddiadau am ddim yn ymdrin â phynciau llosg cyfoes ym myd addysg

Cyrsiau datblygu a chefnogaeth i aelodau sy'n dymuno ymwneud â strwythur democrataidd NASUWT

**ARBED** ar aelodaeth clwb ffitrwydd, tansygrifiadau ffitrwydd digidol a mwy trwy YourFitnessClub

**ENNILL** hyd at £55 mewn talebau siopa drwy wahodd pedwar o fy nghydweithwyr i ymuno â NASUWT



# ARBED MWY...

Fel aelod o NASUWT, gallwch fanteisio ar dros 250 o ostyngiadau a chynigion unigryw ar eich cartref, car, nwyddau trydanol, bwyta allan, gweithgareddau hamdden, cardiau rhodd manwerthu, gwyliau a theithio.

Mae ein e-gylchgrawn Budd-daliadau a Gwasanaethau ddeufisol yn cynnwys bargeinion unigryw, gostyngiadau a rafflau am ddim.

Os na fyddwch yn derbyn hwn, da chi:

**FFONIWCH 029 2054 6080**

**Dyddiau'r wythnos 8.30am-5.30pm**

**E-BOSTIWCH**

**MEMBERSHIP@MAIL.NASUWT.ORG.UK**

Bydd cyfran fach o'r cynigion hyn yn ddigon hawdd i dalu am gost eich tanystrifiad NASUWT ac yn eich helpu i arbed mwy.

**Ac, os ydych yn recriwtio athrawon eraill i NASUWT, gallwch gael talebau **Love2Shop** hefyd!**

Ewch i **[www.nasuwtbenefits.co.uk](http://www.nasuwtbenefits.co.uk)** neu **sganiwch y côd QR** ar eich cerdyn aelodaeth.

## CYMRYD RHAN

Anogwch eich cyd-athrawon dan hyfforddiant i ymuno â NASUWT.

Codi materion ynghylch lleoliadau athrawon gyda'r Undeb.

Siaradwch â NASUWT am drefnu digwyddiadau y mae gan athrawon dan hyfforddiant ddiddordeb ynddynt.

Hyrwyddo digwyddiadau datblygiad proffesiynol am ddim i gyd-fyfrwyr.

[NASUWT.ORG.UK/GETTINGACTIVE](https://www.nasuwt.org.uk/gettingactive)

## PEIDIWCH Â CHOLLI ALLAN!

DIWEDDARWCH EICH MANYLION A DILYNWCH NI!

Newid cyfeiriad? Newid ysgol? Symud tŷ?  
Rhowch wybod i ni:

[NASUWT.ORG.UK](https://www.nasuwt.org.uk)

Ac, i gael yr holl newyddion, cyngor a digwyddiadau diweddaraf gennym ni, dilynwch ni ar gyfryngau cymdeithasol.

Chwiliwch am @nasuwt ar:

