




## ICC Birmingham - accessibility review - June 2024

Description	Photo/Illustration	Comments
<p>The venue is generally very accessible with level horizontal access throughout. The lifts should accommodate all users. Hearing assistance is provided at the Box Office and in the main auditorium. There is a designated dog spending area and assistance dogs can be provided with water. Lowered tables, lecterns and portable ramps and hearing loops can be provided on request.</p>		
<p>Blue Badge parking is available via prior arrangement at the side of the ICC. The parking is located off NC5, through two automatic gates signed Bay B. This gives step free access to Level 3 of the ICC. There are 9 bays at this location</p>		
<p>The pedestrian entrance outside the venue main entrance is open, on a slight gradient and in good condition.</p>		

## ICC Birmingham - accessibility review - June 2024

The Brindley Place entrance is located in an area that is only accessed by steps. Step free access from the Brindley Place side of the canal is via lifts in The Park and then a bridge which leads to the level 3 entrance of the venue.



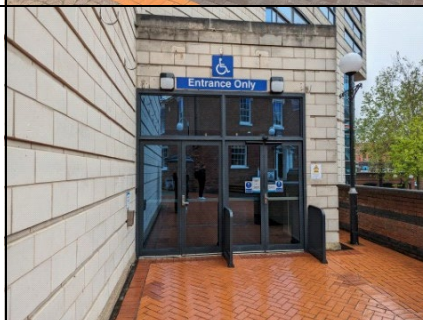
There are two sets of double automatic doors located at the main entrance that are not easily defined from the surrounding glazing. The doors have a total clear width of approximately 1640mm. There are two sets of single leaf automatic doors located to the right of the entrance area that are used during inclement weather. During events staff are located at the entrance to provide assistance.



There are two sets of double automatic doors located next to the drop off point that are not easily defined from the surrounding glazing. The doors have a total clear width of approximately 1640mm. During events staff are located at the entrance to provide assistance.

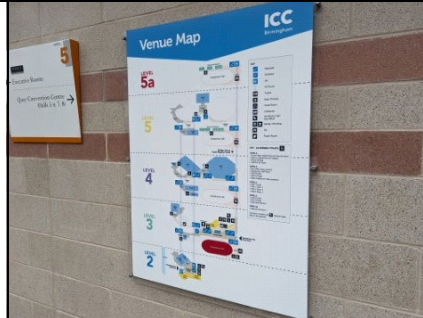


There are two sets of double doors at this entrance. The doors have a total clear width of approximately 820mm, the set on the left manual and those on the right are automatic and open towards you. There is an intercom which is approximately 820mm high. During events staff are located at the entrance to provide assistance.



## ICC Birmingham - accessibility review - June 2024

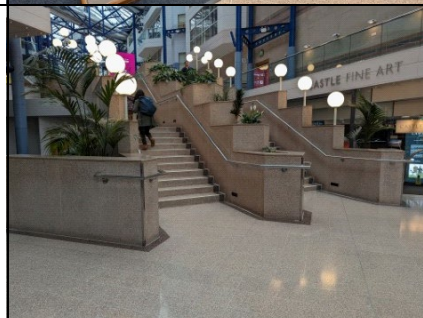
Pictorial signage is consistent throughout the venue. It is likely there will be further specific signage at the event.



There is a ramp and steps. It is approximately 1:11 over 5m (which is steeper and longer than currently recommended but is likely to be the best that could be achieved) and has handrails at approximately 940mm high. The flooring does not have contrasting colour surface. There are three well marked steps on either side of the ramp with handrails.



There is level or step free access from level 3 upwards which includes all the conference areas being used. Visual contrast is generally good throughout the venue. Lighting is good throughout the venue. There is mixed flooring with short pile carpet and hard tiled flooring. The latter is reflective and may cause disorientating glare for some people with visual impairments. The level two public thoroughfare between the main entrance and Brindley Place has stepped level changes.



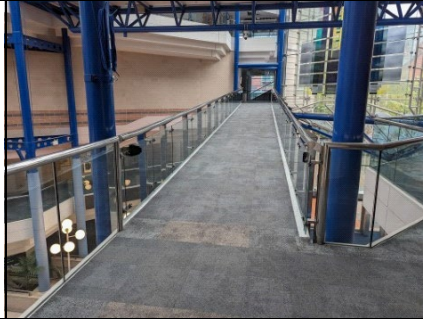
There is level or step free access from level 3 upwards which includes all the conference areas being used. Visual contrast is generally good throughout the venue. Lighting is varied throughout the venue with some areas of low lighting. The flooring is short pile carpet. There are structural columns located on some walkways that have a good contrast with the flooring. There is a slight slope on the walkway between the level 3 entrance and the main lift.





## ICC Birmingham - accessibility review - June 2024

There is a ramp for all users linking both wings of the venue. It is approximately 1:12 over 27m (this is longer than recommended for a 1:12 gradient but may be the best that could be achieved) and has handrails on both sides. The flooring does not have contrasting colour surface.



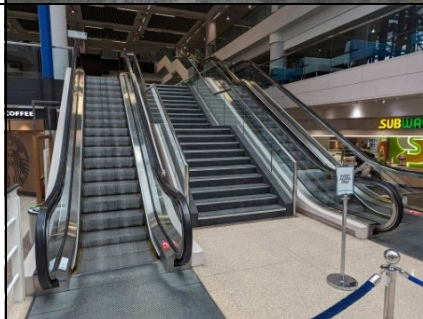
The lifts are located at the rear of the main lobby and there is clear circulation space in front of them. The call button is approximately 1020mm high. The lifts go to all floors and have tactile and braille controls, a visual display, and an audible announcer. They should be suitable for all users.



They are reasonably well designed with treads of approximately 290mm and risers of approximately 150mm. There is a continuous metallic handrail at 910mm from the pitch of the stairs which may not allow full grip but should nevertheless be useable by most people. The staircases around the venue generally follow this type with some slight variations. The nosings of the steps do not contrast well visually (to allow visually impaired people to recognise the edges of the steps).



Escalators give access from level 2 to level 3.



## ICC Birmingham - accessibility review - June 2024

The lifts are easy to find and there is clear circulation space in front of them. The call button is approximately 970mm high. The lift on the level 3 entrance side of the venue does not give access to level 3. They should be suitable for all users. Those entering from that entrance are directed to the glass lift. A glass lift may not be suitable for some people with sight impairments or those that are neurodiverse.



Platform lifts are located outside of Halls 3, 11, and the Media Suite to overcome steps giving step free access to the conferencing areas. The call buttons are approximately 980mm high. The media suite platform lift does not have manoeuvring space directly in front of the lift doors which may be problematic for some disabled people.



Standard toilets across the venue contain similar fixtures but were locked at the time of survey and so were not checked in detail.

## ICC Birmingham - accessibility review - June 2024

The wheelchair-accessible WCs are located adjacent to the halls on all levels, off the first floor lift lobby. The facilities are of varying dimensions and have different fixtures. None of the accessible toilets had the required manoeuvring space and some lacked handrails in the correct configuration. The doors are quite heavy to operate. Bins are also located in some of the transfer spaces.



The registration foyer and exhibition Hall is located to the right as you exit the glass lift on level 3. The hall can be accessed via double, heavy, manual doors. A fixed hearing loop is located in the hall. A platform lift is located at the back of house to give access to the stage. Conference style chairs without armrests are the only chairs available.



## ICC Birmingham - accessibility review - June 2024

Halls 6, 7, 8 and 10 are can be partitioned in to 'a' and 'b' areas. They are accessed via double, manual doors that open towards you and have a clear width of approximately 1500mm. There are fixed hearing loops located within the halls and a portable loop on request. Low height lecterns and tables are available on request. Where halls have low level stages ramps are available. Conference style chairs without armrests are the only chairs available.



There is level access to the main auditorium. Access is via double doors which can be held open. Wheelchair spaces are located on Row Q and are accessed via level 4 through double doors, there is a slight slope after the doors on either side of the auditorium. There is a hearing loop in the main auditorium. A platform lift is located at the back of house to give access to the stage.

